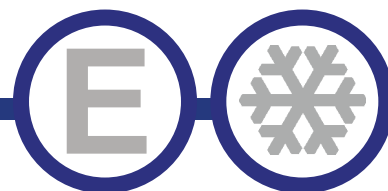




# Series "A"



## Bottle Coolers



BST-36-HC



BST-50-HC



BST-94-HC



BST-65-HC

Model
BST-36-SI-HC
BST-50-SI-HC
BST-65-SI-HC
BST-94-SI-HC

### STANDARD FEATURES

- CFC free refrigerant and foam with self contained capillary tube system
- Forced-air cooling
- Adjustable dividers
- Self-Defrosting Evaporator
- Bottle cap opener & cap catcher standard
- Certified to ANSI / NSF7 standards
- Four 1" Fixed Rollers
- **Now with LED Lighting**
- Warranty: 2 years parts and labor  
additional 3 years- compressor

**\*Not suitable for installation in a non-commercial or residential applications.**

Items	Description	Items	Description
External top/side	<a href="#">Stainless steel</a>	Temperature control	<a href="#">Solid State T-stat with Digital Display</a>
Door	<a href="#">Stainless steel</a>	Comply to standard	<a href="#">ETL LISTED, ANSI / NSF-7</a>
External back	<a href="#">Steel painted black</a>	Refrigerating system	<a href="#">Capillary tube</a>
Cabinet internal	<a href="#">430 stainless steel</a>	Refrigerant	<a href="#">R600a (BST-94-HC R290)</a>
Internal floor	<a href="#">304 stainless steel</a>	Temp. Range in box	<a href="#">34°F — 38°F</a>
Insulation	<a href="#">Polyurethane (CFC free)</a>	Evaporator/Condenser	<a href="#">Aluminum + Copper</a>
Dividers	<a href="#">Heavy duty, Epoxy coating – 3 or 4 layers</a>	Condensing unit	<a href="#">Side Mount</a>
Lighting	<a href="#">LED Lighting</a>	Doors	<a href="#">Sliding Doors</a>

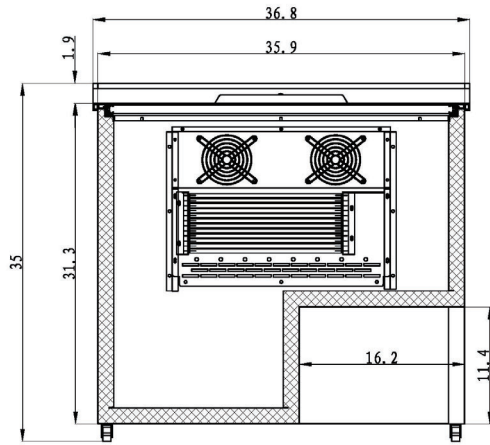
BOTTLE COOLERS



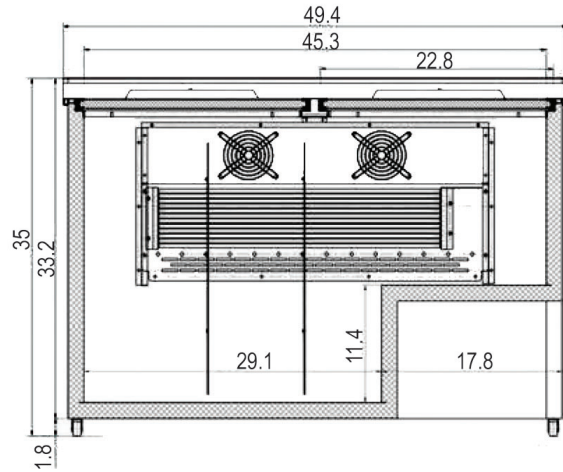
# DETAILS AND DIMENSIONS

\*Not suitable for installation in a non-commercial or residential application

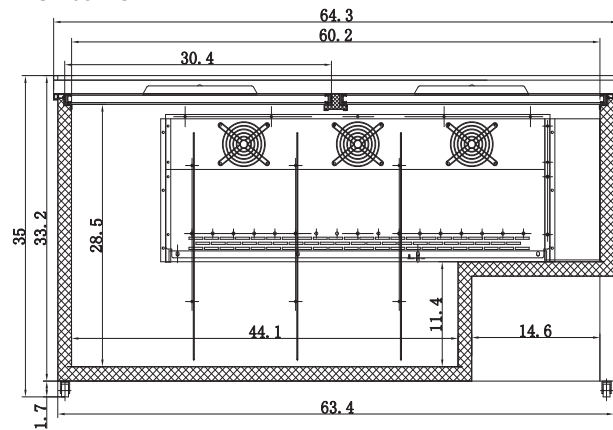
BST-36-HC



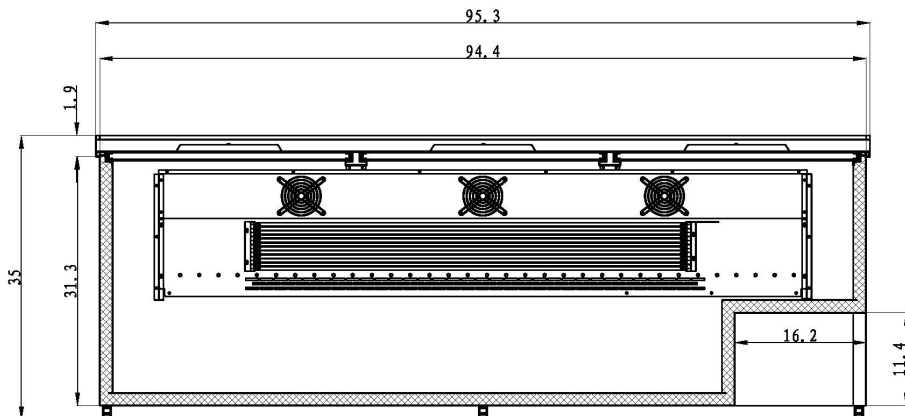
BST-50-HC



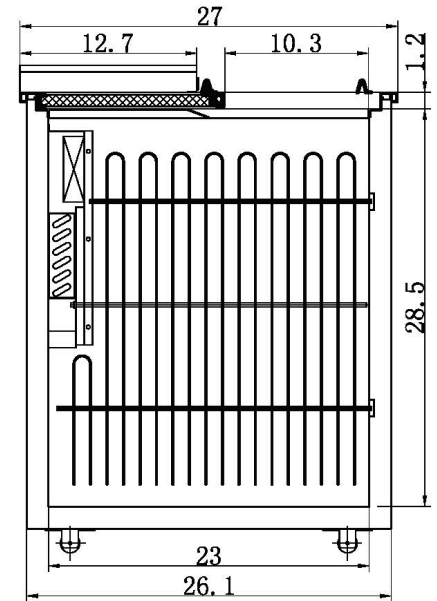
BST-65-HC



BST-94-HC



SIDE VIEW ALL MODELS



Model	# of Lids	Dividers	Cabinet Dim (in)			HP	Voltage /Hz /ph	Amp	NEMA Plug	Cord Lgth (ft)	Crated Weight (lbs)
			W	D	H						
BST-36-SI-HC	1	-	36.8	27	35	3/8	115/60/1	1.8	5-15P	8.2	212
BST-50-SI-HC	2	2	49.4	27	35	1/2	115/60/1	3.0	5-15P	8.2	309
BST-65-SI-HC	2	3	64.3	27	35	1/2	115/60/1	3.0	5-15P	8.2	353
BST-94-SI-HC	3	3	95.3	27	35	1/2	115/60/1	3.0	5-15P	8.2	439