

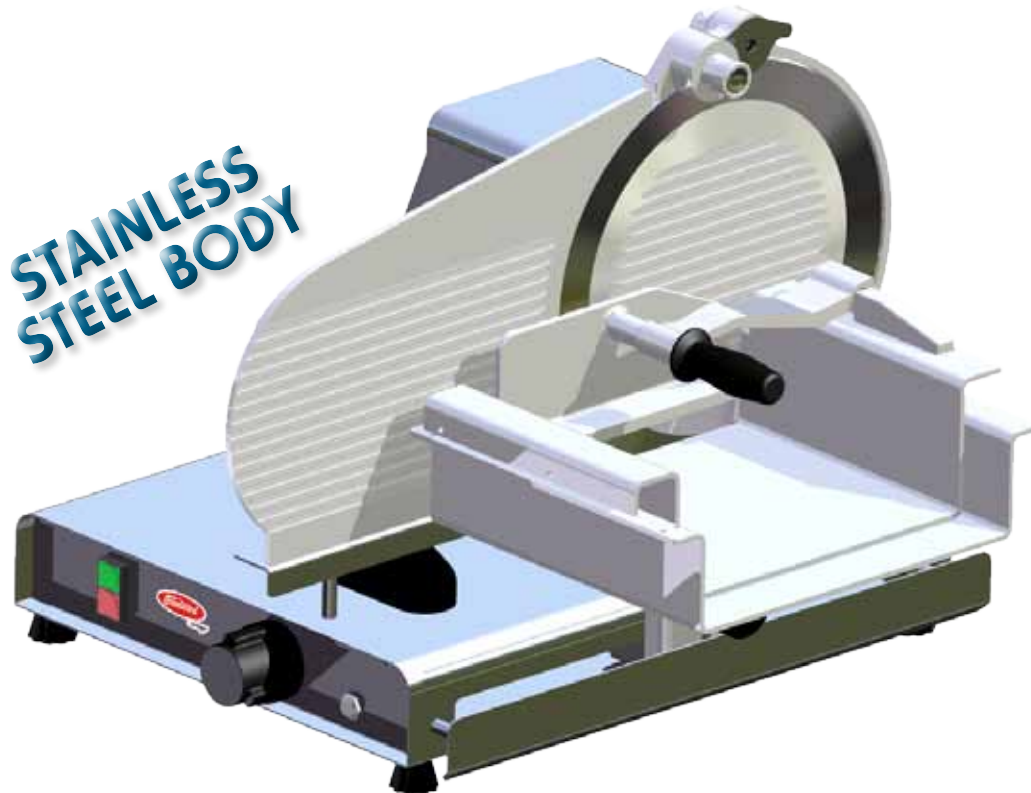
Skyfood  
Equipment LLC



by SKYMSSEN

## FC-350 MEAT SLICER

**THE WIDEST CUT IN THE INDUSTRY**

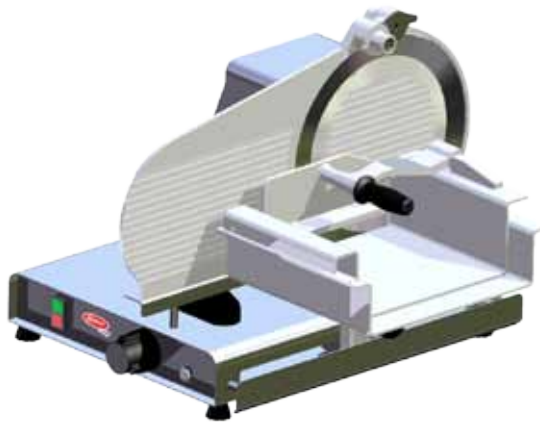


Fleetwood by Skymssen's heavy duty straight feed Slicer is perfect for slicing large pieces of boneless raw and fresh meat. Its stainless steel body, top permanently mounted sharpener and dual sliding carriage make slicing meats easy and convenient. Cuts up to 1.5" (40mm) wide, the widest cut in the industry. Powerful 1/2 HP motor and 14" blade are ideal for cutting oversized products.

**ORDER TOLL FREE 800-445-6601**  
[www.skyfood.us](http://www.skyfood.us)

## FC-350 MEAT SLICER

- **APPLICATION:** Perfect for medium to large size Restaurants, Supermarkets, Butchers, Deli's and Catering industry to slice boneless raw and fresh meat and ham.
- **SLICE THICKNESS:** Infinitely variable. From 0 up to 1 1/2" (40mm) wide, the widest cut in the industry.
- **CUTTING CAPACITY:** 15" wide x 13 3/4" long x 5" high.
- **BLADE:** 14" hollow ground, chromium coated hardened steel.
- **MOTOR:** 1/2 HP fan cooled.
- **ELECTRICAL:** 110/60/1, push button switch with plastic wet cover.
- **SAFETY:** Safety interlock in blade cover and fixed rear guard.
- **CONSTRUCTION:** Stainless steel body, naval aluminum plate and carriage.
- **CLEANING:** Removable carriage and blade cover for easy cleaning.



Voltage.....	110 V
Power Rating .....	1/2 HP
Height .....	20 5/8 "
Width .....	29 1/2 "
Depth.....	28 3/8 "
Net Weight.....	110 lb
Shipping Weight .....	144 lb
Blade Diameter.....	14 "
Slice Thickness.....	from 0 up to 1 1/2 "

**Office:**  
12550 Biscayne Blvd. Suite 800-3  
North Miami, FL 33181 - USA  
Phone: 305 868 1603  
Fax: 305 866 2704

**ORDER TOLL FREE 800-445-6601**  
[www.skyfood.us](http://www.skyfood.us)

Contact your local Skyfood Representative for additional information.  
Visit our web site at [www.skyfood.us](http://www.skyfood.us) for location and contact information.

**Warehouse:**  
71 Bloomfield Ave  
Newark, NJ 07104 - USA  
Phone: 973 482 5070  
Fax: 973 482 0725