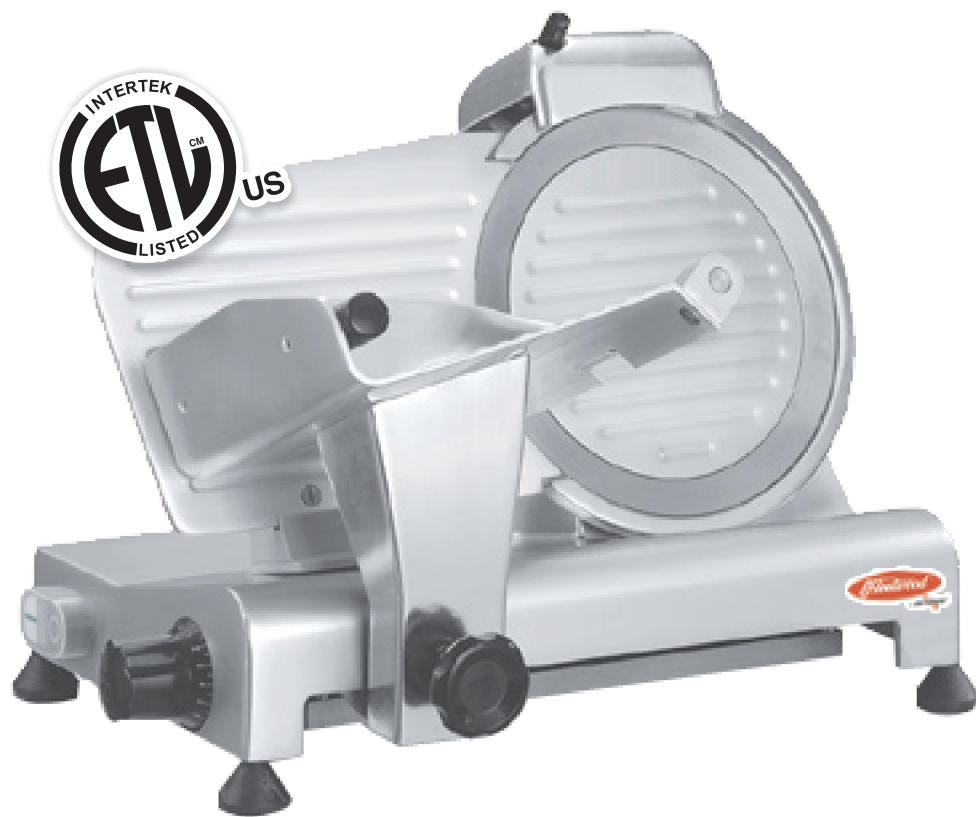


220E

9" ECONOMY SLICER



Durable, easy to clean, compact, handy and attractively priced 9" slicer. Rounded one piece cast aluminum body with Anodized finish. Top mounted guarded sharpener and safety rear ring guard for safe operation. Compact body.

ORDER TOLL FREE 800-445-6601

www.skyfood.us

9" ECONOMY SLICER - 220E

Durable, easy to clean, compact, handy and attractively priced 9" slicer. Rounded one piece cast aluminum body with Anodized finish. Top mounted guarded sharpener and safety rear ring guard for safe operation. Compact body.



220E

Voltage.....	110V
Power Rating.....	0,25HP
Consumption	3 AMPS
Height.....	13 1/4"
Width	11"
Depth.....	16"
Net Weight.....	31lbs
Gross Weight.....	40lbs
Cutting Height.....	7 7/8"
Cutting Width.....	7 1/2"
Blade Diameter.....	9" (Stainless Steel)



The Fleetwood by Skymssen 220E 9" manual slicer is a competitively priced machine with features rarely found on a lower cost machine. Clean lines eliminate all crevices and corners so thorough cleaning is easy, only the product carriage and blade guard are removable and they disassemble without use of any tools. A integral top mounted guarded sharpener, stainless steel blade and water proof switch insure years of safe reliable slicing.

An integral sharpener is permanently mounted ready for use. Precision machined components are enclosed within a heavy one piece casting.